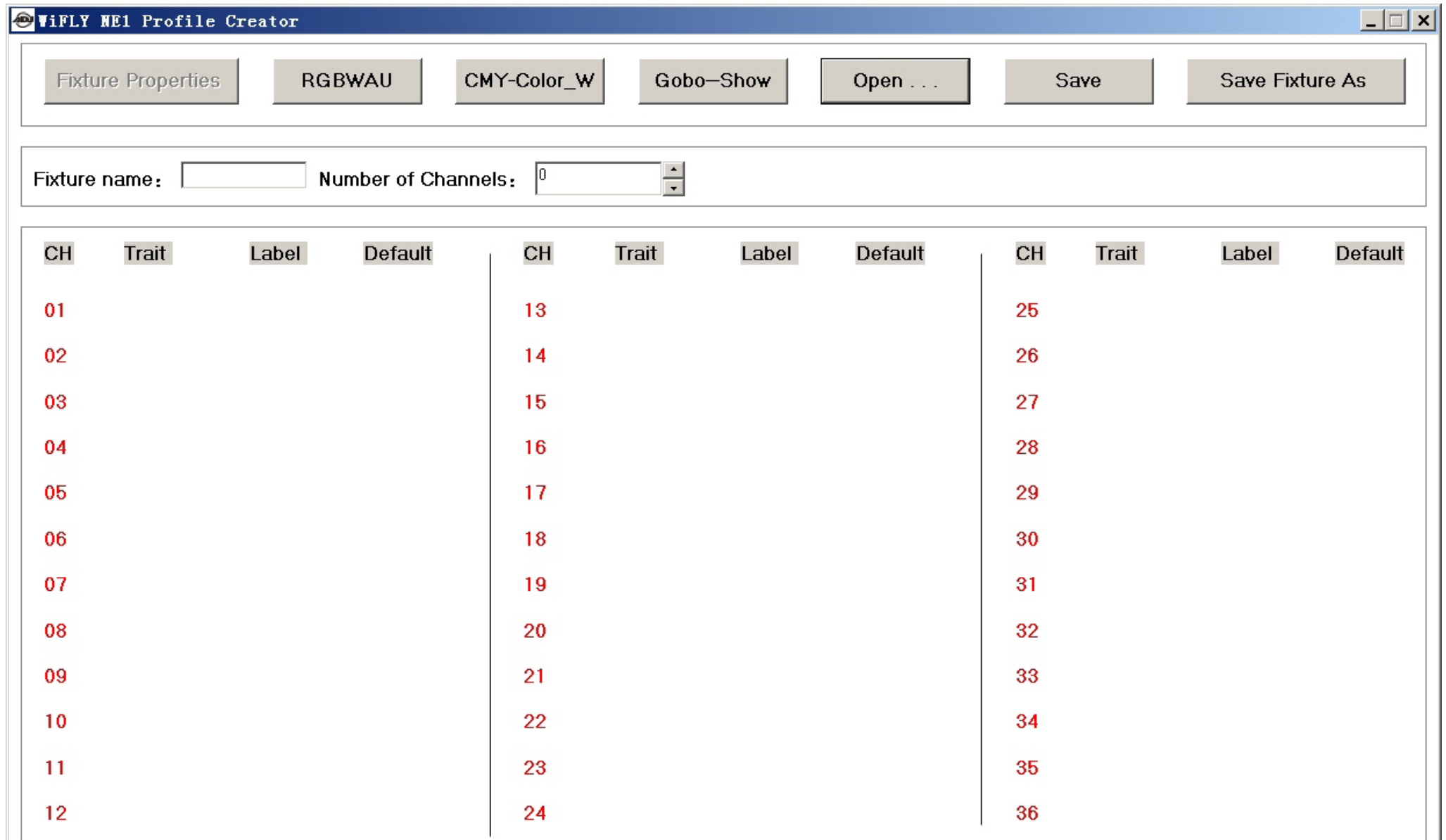


1. Launch Profile Creator and you will see main graphic interface.



2. ① Enter fixture name. 8 characters max.
- ② Enter the number of channels for your fixture. Up to 36 channels max.
- ③ From the drop down list, choose the trait for each channel. If your channel trait is not listed, use "Generic Channel". Note: the same trait cannot be used more than four times. For example, "RED" can only be used up to four times. Also, RGB and CMY traits cannot be used in the same profile.
- ④ Enter the label, for each channel, 8 characters max., that will be displayed in your NE1 display. If you're ok with the label that is automatically generated, you can leave it as is.
- ⑤ You can input a default value between 0-255, except for the ones which are grayed out. This value will determine what the given channel does when a fixture is selected on your NE1 controller. For example, if you want the pan and tilt channels to go to "Center", you should leave these channels set to 128.

ViFLY NE1 Profile Creator

Fixture Properties RGBWAU CMY-Color_W Gobo-Show Open . . . Save Save Fixture As

① Fixture name: Number of Channels:

CH	③ Trait	Label	④	Default	⑤	CH	Trait	Label	Default	CH	Trait	Label	Default
01	Red	Red		0		13				25			
02	Green	Green		0		14				26			
03	Blue	Blue		0		15				27			
04	Dimmer	Dimmer		255		16				28			
05	Shutter	Shutte		0		17				29			
06	Generic channel			0		18				30			
07						19				31			
08						20				32			
09						21				33			
10						22				34			
11						23				35			
12						24				36			

3. If your fixture includes RGBWA+UV channels, you can input values here to set your own color macros, except for the cells which are grayed out. Values are automatically created for each RGBWA+UV channel but can easily be edited by clicking in a cell and entering a new value. Up to 24 color macros can be created.

The screenshot shows the 'WiFLY NE1 Profile Creator' software window. The 'RGBWAU' tab is selected, displaying a grid for defining 24 color macros. The columns represent channels: CH1 (R), CH2 (G), CH3 (B), CHX (W), CHX (A), CHX (U), CHX (R), CHX (G), CHX (B), CHX (W), CHX (A), CHX (U), CHX (R), CHX (G), CHX (B), CHX (W), CHX (A), CHX (U), CHX (R), CHX (G), CHX (B), CHX (W), CHX (A), CHX (U). The first three columns (CH1, CH2, CH3) are active, while the rest are grayed out. The grid contains 24 rows, each representing a macro. The values for the first three channels are as follows:

Macro	CH1 (R)	CH2 (G)	CH3 (B)
1	255	0	0
2	255	50	0
3	255	100	0
4	255	150	0
5	255	200	0
6	255	255	0
7	200	255	0
8	150	255	0
9	100	255	0
10	50	255	0
11	0	255	0
12	0	255	100
13	0	255	150
14	0	255	200
15	0	255	255
16	0	200	255
17	0	150	255
18	0	100	255
19	0	0	255
20	100	0	255
21	150	0	255
22	200	0	255
23	255	0	255
24	255	255	255

4. If your fixture includes CMY or Color wheel channels, you can create your own CMY macros and input your color preset values here. On the left side of the interface, you input your own values from 0-255 for each Cyan, Magenta and Yellow channel. Values are automatically created but can easily be changed by clicking in a cell and inputting a new value. For the color wheel data, which is on the right side of the interface, you must input a step value that you want the controllers "Color" function to target. For example, our second color on our color wheel is between values 10-20, we recommend that you input 15 as it falls between the two given values. Up to 24 CMY macros and 24 Color presets can be created.

The screenshot shows the 'WIFLY NE1 Profile Creator' software interface. At the top, there are several buttons: 'Fixture Properties' (highlighted in blue), 'RGBWAU', 'CMY-Color_W', 'Gobo-Show', 'Open ...', 'Save', and 'Save Fixture As'. Below the buttons, there are two main configuration tables.

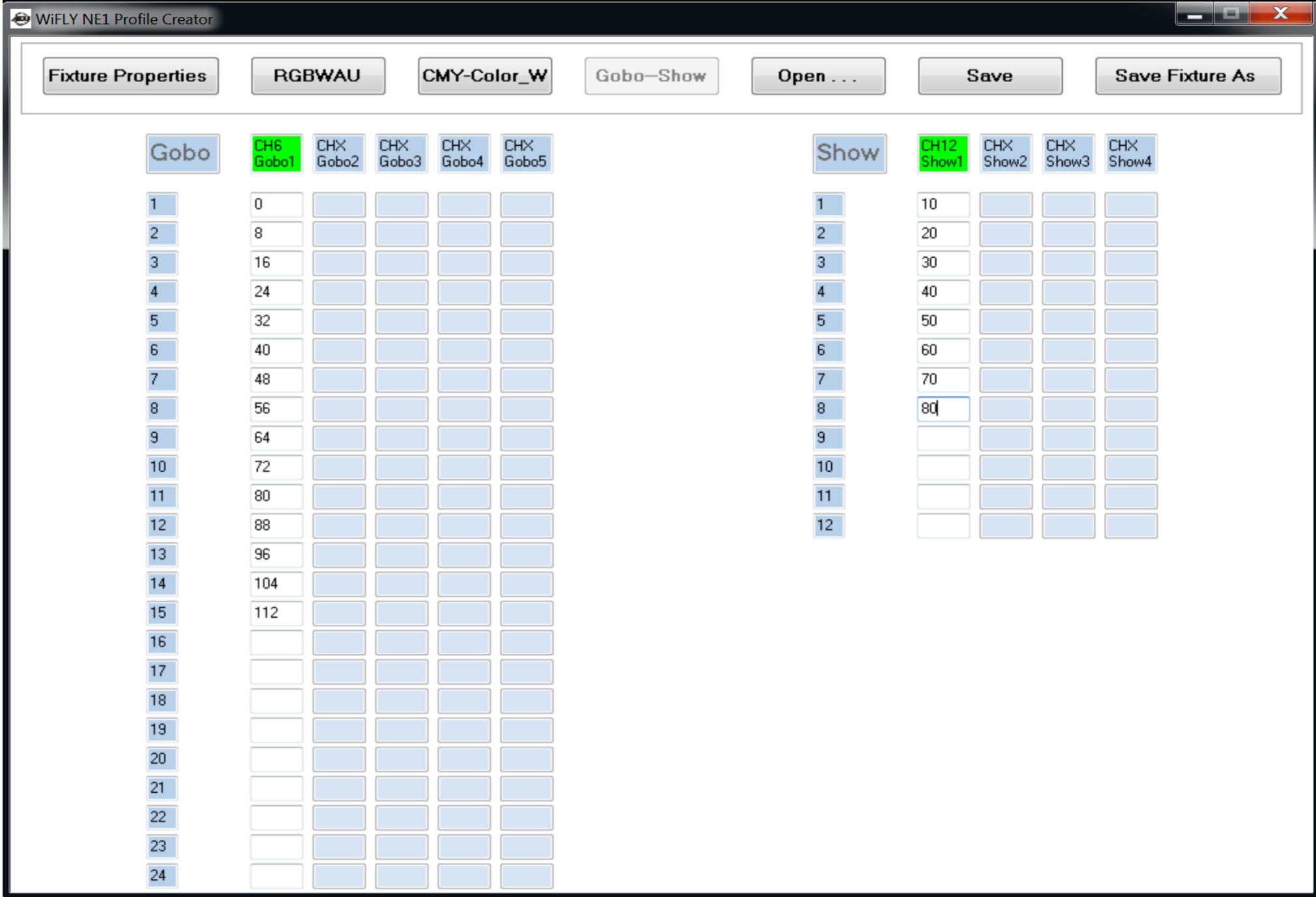
The left table is for CMY macros. It has a header row with columns: 'CMY', 'CH4 C--1', 'CH5 M--1', 'CH6 Y--1', 'CHX C--2', 'CHX M--2', 'CHX Y--2', 'CHX C--3', 'CHX M--3', 'CHX Y--3', 'CHX C--4', 'CHX M--4', and 'CHX Y--4'. The rows are numbered 1 to 24. The values for the first three columns (CH4, CH5, CH6) are as follows:

Row	CH4 C--1	CH5 M--1	CH6 Y--1
1	255	0	0
2	255	50	0
3	255	100	0
4	255	150	0
5	255	200	0
6	255	255	0
7	200	255	0
8	150	255	0
9	100	255	0
10	50	255	0
11	0	255	0
12	0	255	100
13	0	255	150
14	0	255	200
15	0	255	255
16	0	200	255
17	0	150	255
18	0	100	255
19	0	50	255
20	0	0	255
21	100	0	255
22	150	0	255
23	200	0	255
24	255	0	255

The right table is for Color wheel (C_W) presets. It has a header row with columns: 'C_W', 'CH3 C_W1', 'CHX C_W2', 'CHX C_W3', and 'CHX C_W4'. The rows are numbered 1 to 24. The values for the first column (C_W) are as follows:

Row	C_W
1	0
2	15
3	29
4	43
5	57
6	71
7	85
8	99
9	113
10	
11	
12	
13	
14	
15	
16	
17	
18	
19	
20	
21	
22	
23	
24	

5. If your fixture includes a "Gobo" wheel and "Show" channel, you can input your gobo and show preset values here. On the left side of the interface, you input the gobo channel values from 0-255. You must input a step value that you want the controllers "GOBO" function to target. For example, the third gobo on your gobo wheel is between values 12-20, we recommend that you input 16 as it falls between the two given values. On the right side of the interface, you input the show channel values from 0-255. You must input a step value that you want the controllers "SHOW" function to target. For example, show 1 is between values 5-15, we recommend that you input 10 as it falls between the two given values. Up to 24 Gobo presets and 12 Show presets can be created.



6. Save your fixture by clicking the “Save Fixture As” button. Name your fixture in the “File Name” entry box. Note: the fixture name cannot be more than 8 characters. Otherwise, your NE1 controller will not recognize the file. When uploading any profile into the NE1 controller, be sure to copy and paste your profiles into a folder named “ADJ-NE1” in your USB stick. Again, if you use a different folder name, the NE1 controller will not recognize it.

